



**BE BOLD. Shape the Future.®**  
**Facilities and Services**

# Ground Up

*From Concept to Completion*

[facilities.nmsu.edu](http://facilities.nmsu.edu)

PD&E Newsletter, February 2023

**Message from the Executive Director, Robert Herrera**



Hello everyone and welcome to another issue of our monthly newsletter. Our featured projects are an athletic facility improvement, a glimpse behind the scenes, and our effort to give back to the community. Our first month of 2023 went fast and we are fully immersed in this year's projects around campus. As we prepare for the end of the fiscal year on the horizon, we will be finishing up some large projects and soon start to prepare for the newly funded project coming in July. It will be an exciting year. As always, I hope you enjoy this edition and I look forward to seeing you around campus.

## Featured Project



**Aggie Memorial Stadium Turf Replacement**

At the tail-end of the football season, the Turf Replacement project began with the removal and replacement of the artificial turf and drainage system in Aggie Memorial Stadium. The original turf was first installed in 2016 and lasted six seasons of Aggie football, marching bands, and other athletic sporting events. The improvements of the new turf will bring an exciting new look to the stadium as our football team takes the field in the new season. The new turf has been extended to the sloped area behind the south end zone and to the sides up to bowl access. The new field will also display our NMSU official logo and branding colors. The project is set to be completed in August before the 2023/2024 season.

## Fun Fact: Nesting Season

*In 1918, the Migratory Bird Treaty Act was implemented as a United States Federal Law for the protection of migratory birds. Amended over the last century, the statute also protects nesting in trees, brush, and any native animal species that burrow underground. The nesting season begins March 15 and stretches over the summer until the end of July. Managing projects has to be strategically planned and worked around this time period if there is removal of trees, brush, or any type of earthwork for new development in order to protect migrant animals during their nesting season.*



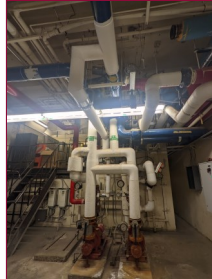
**PD&E Project Map**

- For a full view of our projects map, click the link below, or scan our QR code!



[Project Development & Engineering \(arcgis.com\)](http://Project Development & Engineering (arcgis.com))

## Outages Process



Throughout the year, utility outages are scheduled quite often to help support maintenance and construction efforts needed campus-wide. The process for scheduling these outages takes coordination from several different departments within Facilities & Services. Scheduling an outage normally begins with the submission to the Utilities Manager, which is reviewed and analyzed to minimize the impact to the campus community. Depending on the type of outage, preplanning and testing may be required prior to final approval. The outage notice is then distributed to building monitors, Fire, Police, and any other surrounding departments the outage may affect. Each notification will contain the anticipated start and end date, time and type of utility outage occurring. Although a necessary component of maintenance and construction, all efforts are made to minimize the impact to the campus.

## Giving Back the Aggie Way

*The New Mexico State University College Assistance Migrant Program (CAMP) was founded in 2002. As an organization to help students develop connection skills and ease the transition from grade school to higher education. The student council takes part in volunteer work, fundraisers, and many activities around campus not only to give back, but for team and individual leadership building experience. Recently CAMP reached out to the NMSU community asking for long sleeved shirt donations to help those who work outside endure the elements that come with living in Southern New Mexico. PD&E assisted in gathering shirts for the cause and we thank everyone for their selflessness and hard work. The program is located in Room 16 in Milton Hall, and is still currently taking long sleeved shirt donations.*



## Budgetary Estimates and Project Requests

Project Development & Engineering offer various customer services for all NMSU campus communities. For preliminary stages on a potential project, we coordinate a meet time to go out and gather any kind of information based on the project description outlined on our online form. The estimate we provide is an initial projection of cost based on scope of work, observations on site, quantities, and general construction methods. To get started, please click on the link below that takes you straight to our project request form and fill out the areas designated to help us work together!

[Project-Request-Form-2020.pdf \(nmsu.edu\)](#)